



22 (USA) MPG
26 (CND) MPG

Free Spirit

Leisure
Travel Vans Ltd.



Leisure Travel Vans Ltd.



Introduction	1
Daimler Chrysler Chassis	2
Comfort & Luxury	3
Floor Plans	4
Specifications	5
Features	6
Interiors	8
Newest Additions	9
Compare Checklist	10
The Leisure Family	12
Inside & Out	13

www.leisurevans.com

Free Spirit 210A & 210B by Leisure Travel Vans

Leisure Travel Vans Ltd.

Leisure Travel Vans has been the Leader in Class B Innovations for over 25 years, keeping up with the changing times by always looking into the future. We are a company steeped in tradition of building the highest quality, innovative motorhomes on the market where a culture focused on the details is taken seriously to ensure the best performing, most comfortable unit on the market today.



No longer will you have to use alternate transportation to go shopping where parking is tight, or to visit attractions where driving conditions prevent access by a full sized motorhome. All of the features you have come to expect in a large motorhome have been carefully engineered to fit perfectly into a Leisure Travel Van.

The Free Spirit sets the standard by which all other Class B's are compared. We suggest you compare a Leisure to others and without a doubt you will see that a Leisure Travel Van exceeds your expectations in every way. It is the best performing motorhome on the Class B Market.



**Daimler
Chrysler
Approved**

Achieved Daimler Chrysler Approval

Leisure was the first Class B Manufacturer to be given the Daimler Chrysler official stamp of approval. Having experienced first hand, Daimler Chrysler Engineer's attention and commitment to quality, LTV will be proud to follow in their footsteps.

Daimler Chrysler Sprinter Chassis

The Sprinter chassis is powered by an amazingly quiet 2.7 litre Turbo charged Mercedes Benz, 5 cylinder Diesel engine with common rail direct injection. An impressive 25 gal fuel tank gives you a range of 550 miles with an estimated 22 (US) mpg. Oil changes are required every 10,000 miles with maintenance intervals at every 20,000 miles. The Sprinter combines long life, low maintenance costs and better fuel efficiency with the smooth, clean quiet performance not typically expected from Diesels. The Mercedes Benz engine generates 154 hp@3800 rpm and 254 lb-ft of torque @ 1600-2400 rpm.

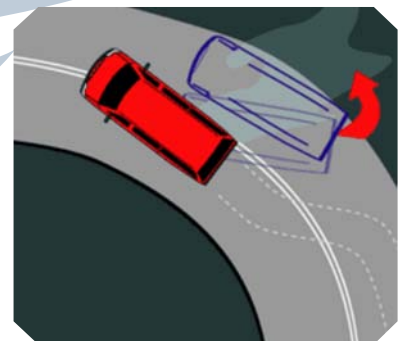


Chassis Safety Features

All units are equipped with 4-wheel disc brakes and 4-wheel ABS for improved steering control under extreme braking and/or slippery conditions. Other safety features include:

- Driver & passenger air bags
- Seat belts with pretensioners for driver and front passenger
- Electronic brake distribution
- 3 point seat belts for all passengers
- Electronic Stability Program (ESP)

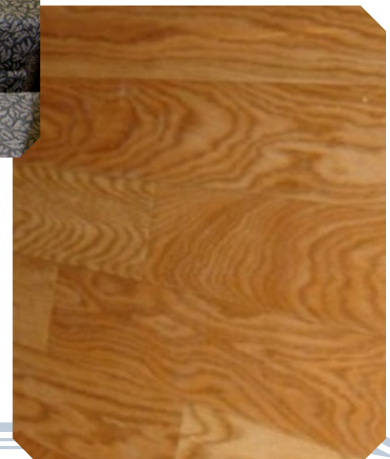
Helps reduce the danger of skidding while helping the driver handle critical situations more effectively.



Every inch of space in the Free Spirit is utilized with the basement storage, overhead cabinets, large wardrobe closet, kitchen cupboards and drawers, flip up counter, pull out pantry and so many more convenient space savers.

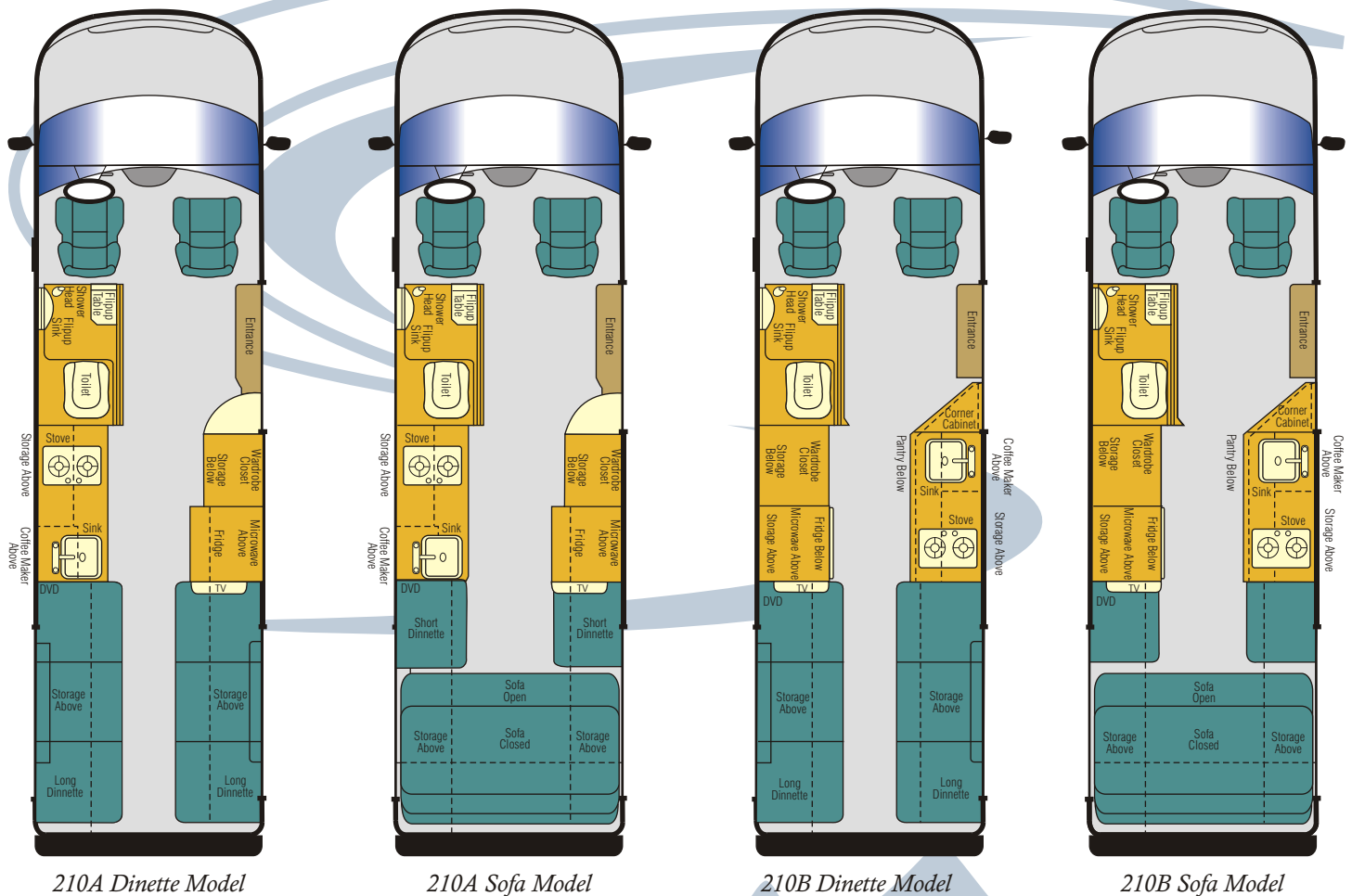


Careful consideration has been given to maximize space by providing components that fold out of the way when not in use, like the electric rear sofa bed, giving the Free Spirit the largest cubic volume of storage in any Class B Motorhome. The warm interior colors, supple Ultraleather and luxurious “oak” flooring offer a truly unique environment. An entertainment package is available with a 17” portable flat screen TV with swing out arm, DVD/MP3/CD player, antenna and exterior TV mount.



Choose A Floor Plan

Every Leisure Travel Van is equipped with standard and optional features - It's your choice which options best suit your Leisure Lifestyle.



210A

The 210A floor plan is equipped with the kitchen on the drivers side of the unit with a window located above the kitchen sink. With this setup the optional corner cabinet is placed along side the wardrobe closet. The dinettes are standard whereas an optional electric rear sofa is available in place of the dinettes.

210B

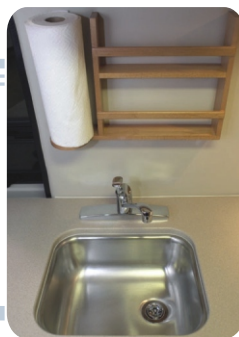
The 210B floor plan is equipped with the kitchen on the passenger side of the unit with the corner cabinet included with the kitchen. The dinettes are standard whereas an optional electric rear sofa is available in place of the dinettes. There are standard features available on the 210B which are not included in the 210A.



Appliances include a 3-way **Norcold Refrigerator** and **Microwave**. Next to the kitchen area is a large **wardrobe closet** (210B).



The kitchen **corner cabinet**, located by the sliding door, is standard on the 210B (as picture shown) and an option on the 210A.



Conveniently located in the kitchen area is the **spice rack with paper towel holder** (210B) & **stainless steel sink** with a Eurostream faucet.



The space under the counter is utilized with a tip out tray under the sink and an extra drawer under the stove.

Innovative Features



A standard feature is the **exterior shower** with hot and cold water for added versatility.



The space saving wet bath has everything you need with a **toilet**, hand held **shower**, flip up **sink**, **table** (210A & 210B) & in addition a **medicine cabinet** with **mirror** (210B).



The **Suburban 16,000 BTU furnace** with **Digital Climate Control** is designed to fit your comfort needs. Installed for your safety is the **Carbon Monoxide detector** and for convenience is a **telephone/internet connection**.



The **17" Flat Screen TV** on a swing out arm with **DVD/MP3/CD Player**, **Winegard Crank up Antenna** and exterior **TV Mount** is available for your viewing pleasure.



Centrally located **Information & Command Center**.



LTV is the only manufacturer to offer the **rear step bumper** with a Class 3 Certified **trailer hitch**.



A great edition to the Free Spirit is the pull out **pantry** with ample space for food storage (210B).



A 12-cup **coffee maker** can be installed in lieu of a cabinet above the kitchen sink.



Storage is always a necessity and there is plenty of it in the overhead cabinets.



Exclusive to LTV is the **basement storage** located in the rear floor accessible from the interior or exterior of the van.



Attach your **Portable TV** to the **Exterior Mount** and watch your favorite programs outside under the awning.



Find out which direction you are going and the temperature outside, with the **Compass/ Thermometer Rear View Mirror**.



Mid-Front to Rear View



The option of the **rear electric sofa** with seatbelts for 3 passengers is easily converted from a sofa to a bed with the push of a button.



With ease, use the Hassle Free **Dump System** with dumping components.



Another great feature is the **drop down tire carrier** with a **molded tire cover**, **license plate holder** and **light**. Available only with the basement storage.



Rear to Front View

Choose from 4 Interior Colours:



Desertsand

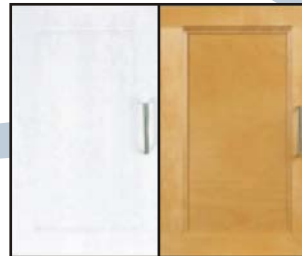


Champagne

*Flooring
Oak or
White*



*Cabinets
European White
or Cinnamon Maple*



Fern Green



Impulse Blue



As of July 2004, Leisure Travel Vans was the first and only manufacturer in North America to offer
Swivel Seats, Tested and Exceed FMVSS Safety Standards
for front driver and passenger seats in the Daimler Chrysler Sprinter Van.



Flexsteel Series 5 Swivel Power Seats.



*New products available for Leisure Travel Vans owners and dealers exclusively.

Shop and Compare... We encourage you to compare a LTV to other brands to appreciate the innovative features our Free Spirit has to offer.

Interior	LTV	Brand X	Brand Y	Brand Z
Recovered driver and passenger seats	✓			
Dual density soft seating foam	✓			
Driver and passenger cup holders	✓			
*Front carpeted floor mats	✓			
Front and rear speakers for radio	✓			
Wet bath w/flip up sink and table (Medicine cabinet in 210B)	✓			
Toilet	✓			
Hand held shower	✓			
Flip up sink	✓			
Vanity counter	✓			
*Medicine cabinet (210B)	✓			
*Retractable clothes line	✓			
Passenger side/back/sliding doors w/storage pockets	✓			
Passenger seat back rest storage pocket	✓			
6 gal. hotwater tank (propane/110 volt centrally located w/bypass)	✓			
12 volt propane shut off	✓			
12 volt quick disconnect	✓			
16000 BTU furnace w/comfort control (centrally located)	✓			
Large wardrobe chest	✓			
Overhead cabinets	✓			
*Locking table pedestals	✓			
*Sliding table	✓			
Temperature control fantastic fan	✓			
*Magazine rack	✓			
Spice rack (210A) w/paper towel holder (210B)	✓			
Garbage bag holder (210B)	✓			
*Pull out pantry (210B)	✓			
Single lever kitchen tab	✓			
Stainless steel sink	✓			
Drop in cutting board	✓			
*Flip up counter extension	✓			
Cutlery draws w/sliding tray	✓			
*Drawer under stove	✓			
*Tip out tray under sink	✓			
*3 CuFt 3 way fridge elevated for easy access	✓			
2 flourescent lights	✓			
Under cabinet lighting (holagen) each separately controlled	✓			
European white cabinets	✓			
*35mm hinges fully adjustable	✓			
Full flow door struts	✓			
Valances with swag curtains	✓			
*Day and night shades	✓			
Dinette style / Twin or King size bed	✓			
3 dual screen awning windows (tinted)	✓			
Tall dual rear doors w/tinted windows and pull up shades	✓			
Cable vision hook up and telephone/computer jack	✓			
Chassis				
158" wheel base	✓			
2.7 litre Mercedes Benz Turbocharged diesel engine	✓			
5 speed automatic	✓			
Four wheel disc brakes with ABS	✓			
Power assisted rack & pinion steering	✓			
Front & rear anti sway bars	✓			
*150 amp alternator	✓			
Air Conditioner	✓			

	LTV	Brand X	Brand Y	Brand Z
Cruise Control	✓			
3.73 rear axle gear ratio	✓			
25 gallon fuel tank	✓			
154 HP @ 3800 rpm	✓			
254 lb - ft of torque @ 1600-2400 rpm	✓			
Electronic brake distribution	✓			
Electronic stability program (EPS)	✓			
Remote lock & mirrors	✓			
Power windows	✓			
Adjustable headlights	✓			
AM/FM stereo with CD	✓			
Driver & passenger side air bags	✓			
Deluxe front seats w/adjustable arm rests & lumbar support	✓			
Spare tire	✓			
Double rear doors	✓			
Exterior				
Front ground effects with driving lights	✓			
Running boards with flared fender wells	✓			
Drop step running board at side entry	✓			
Front license plate holder	✓			
*Rear step bumper	✓			
*5,000 lb hitch with 500 lb tongue weight; class 3 certified	✓			
*2 tone paint	✓			
*Urethane with silent ride undercoat	✓			
*Pre connected 18' sewer hose	✓			
*Dump valve cover (lockable)	✓			
Quick fill propane	✓			
Low point water drain system	✓			
Outside shower	✓			
Outside porch light	✓			
Dual 110 plug GFI outlet	✓			
Kitchen window (210A)	✓			
Cable vision & telephone jack	✓			
Options				
*3 sleeper floor plan	✓			
*Front driver & passenger side swivel seats	✓			
*Front driver & passenger side Flexsteel Series S swivel/power seats	✓			
9100 BTU air conditioning with 1800 watt heat strip	✓			
*13' awning	✓			
2.5 KW propane generator	✓			
*17" flat screen portable TV w/swing out arm, DVD (audio & video)	✓			
w/crank up TV antenna & booster & exterior TV mount	✓			
Ultra leather seats	✓			
Ultra leather bedroom area	✓			
*Electric sofa, dual control w/ 3 seat belts	✓			
Rear door screen	✓			
Driver & passenger door screen package	✓			
Grill screen	✓			
*5.5 cu.ft. basement storage w/rear mount spare tire	✓			
Coffee maker	✓			
Oak vinyl flooring	✓			
*Back up camera w/monitor	✓			
*Dual coach battery	✓			
Cinnamon maple cabinets w/solid wood doors	✓			
Corner storage cabinet (210A)	✓			
*Compass & temperature rear view mirror	✓			
*Firestone Ride Rite air suspension	✓			
*Trailer wiring	✓			

**Features setting LTV above the rest*

The Leisure Connection

Maintaining a connection with owners is a key element in Leisure's program to continue improving our vehicles. In working to keep in touch with owners, Leisure became more than a company, we developed a community. Once a year, we organize an owner's rally - a fun way for Leisure Motorhome owners to meet and learn more about their vans and all the travel possibilities .



Leisure's popularity has also resulted in the organization of regional chapters. It's your chance to share travel stories with neighboring Leisure customers. You'll be surprised to discover how many Leisure owners there are out there - just like you.

September 2004 marks the 10th Anniversary of the Leisure Travel Vans Annual Owners Rally. For 10 years, LTV owners have been getting together in Manitoba for a weekend full of LTV information, seminars, tours, entertainment and some great Mennonite heritage food, all part of the event. For more information on the Rally please contact the factory.



Inside & Out, Before & After

We work hard for you - At Leisure Travel Vans we recognize how hard you have worked to achieve the opportunity to invest in one of our motorhomes. Every detail from start to finish is checked and double-checked to insure your motorhome will give you years of lasting enjoyment.



To maintain the high level of quality and finish that Leisure Travel Vans is known for, many components are developed and fabricated on-site. Leisure Travel Vans equips the Free Spirit with customized wood cabinetry built in its own woodshop, and with specially designed interior and exterior trim formed in the plastics department.

Factory seat covers are replaced by Leisure Travel Vans' experienced sewing department (and embroidered upholstery) using long-lasting quality fabrics. An in house paint shop applies the automotive paint on specific areas of each unit. To preserve the value and quality of the vehicle, each Free Spirit is equipped with stone guard and a urethane undercoating. Such measures reduce road noises, and protect the undercarriage and the holding tanks from harsh road elements.

Our plant is located in Morden, Manitoba, Canada, home of the Annual Corn and Apple Festival. We are open for plant tours Monday through Friday at 10:00am and 2:00pm. We will give you as much time as you desire to get to know us and our products better, but we ask that you call ahead so we can be sure to accommodate you.

